

The background features a repeating pattern of stylized leaves in white and light gray against a dark gray background. The leaves are arranged in a way that creates a sense of depth and movement, with some leaves appearing to be in the foreground and others receding into the background.

JOHANSON

Sustainability



Lucas Carlsson
Hållbarhetsansvarig

070-310 59 07
lucas@johansondesign.se

Topics

- Möbelfakta/EU Ecolabel
- EPD
- Johanson CSR
- Sustainable & circular materials
- Digital Produkt passports
- Social media – show the world what we do
- Europe is changing
- Q&A?

Environmental Certifications

- Type I
ISO 14024



MÖBELFAKTA

- Type II
ISO 14021
- Own environmental statement

- Type III
ISO 14025



Möbelfakta

- New version 16.2

Champ



Peak



Opus



Ava



Möbelfakta

Coming certifications

Plus



Lindy





MÖBELFAKTA CERTIFICATE

PRODUCT NAME: Ester
 Product collection Ester, model armchair with legs or swivel base, powder coated metal surfaces and Fame upholstery. This collection is also available in a wide range of other upholsteries that fulfills möbelfakta's requirements or dressed in customer fabrics.

DESIGNER: Alexander Larvik
 COMPANY: Johanson Design AB
 REG.NUMBER: 0420190219
 USE CLASS: Non-domestic
 VALIDITY: 2019-03-19 - 2024-03-19 provided that the furniture and the criteria in Möbelfakta are not changed. When changes have been made, there is a transition period of 12 months.

THIS PRODUCT HAS BEEN DECLARED AND APPROVED ACCORDING TO THE CRITERIA OF MÖBELFAKTA VER. 2019-05-01.

- QUALITY** - THE PIECE OF FURNITURE MUST MEET ESTABLISHED INTERNATIONAL TECHNICAL STANDARDS
- ENVIRONMENT** - ALL STAGES OF THE MANUFACTURING PROCESS MUST BE GREEN. FROM RAW MATERIALS TO FINISHED PRODUCT
- SOCIAL RESPONSIBILITY** - ALL STAKEHOLDERS IN THE PRODUCTION CHAIN MUST COMPLY WITH UNITED NATIONS GLOBAL COMPACT

Carmen Daoud
Carmen Daoud, Trossa



DESIGNER: Johan Lindstén
 COMPANY: Johanson Design AB
 REG.NUMBER: 0220200306
 USE CLASS: Non-domestic
 VALIDITY: 2020-03-06 - 2025-03-06 provided that the furniture and the criteria in Möbelfakta are not changed. When changes have been made, there is a transition period of 12 months.

THIS PRODUCT HAS BEEN DECLARED AND APPROVED ACCORDING TO THE CRITERIA OF MÖBELFAKTA VER. 2019-05-01.

- QUALITY** - THE PIECE OF FURNITURE MUST MEET ESTABLISHED INTERNATIONAL TECHNICAL STANDARDS
- ENVIRONMENT** - ALL STAGES OF THE MANUFACTURING PROCESS MUST BE GREEN. FROM RAW MATERIALS TO FINISHED PRODUCT
- SOCIAL RESPONSIBILITY** - ALL STAKEHOLDERS IN THE PRODUCTION CHAIN MUST COMPLY WITH UNITED NATIONS GLOBAL COMPACT

✘ THIS PRODUCT HAS BEEN DECLARED AND APPROVED ACCORDING TO THE CRITERIA OF MÖBELFAKTA VER. 2019-05-01.

✔ THIS PRODUCT HAS BEEN DECLARED AND APPROVED TO THE CRITERIA OF MÖBELFAKTA:







EPD – Environmental Product declaration

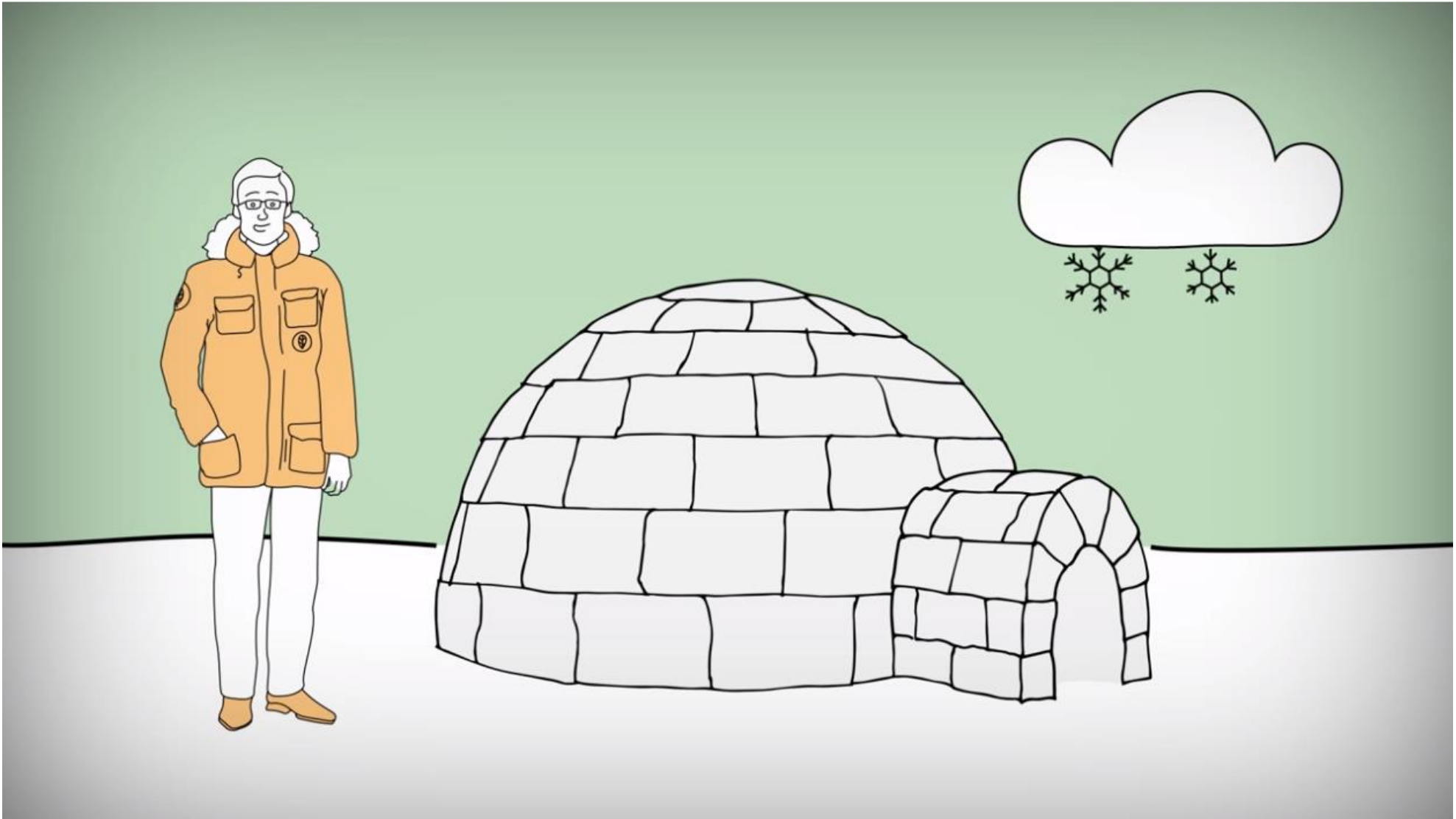
What's coming? What's new?

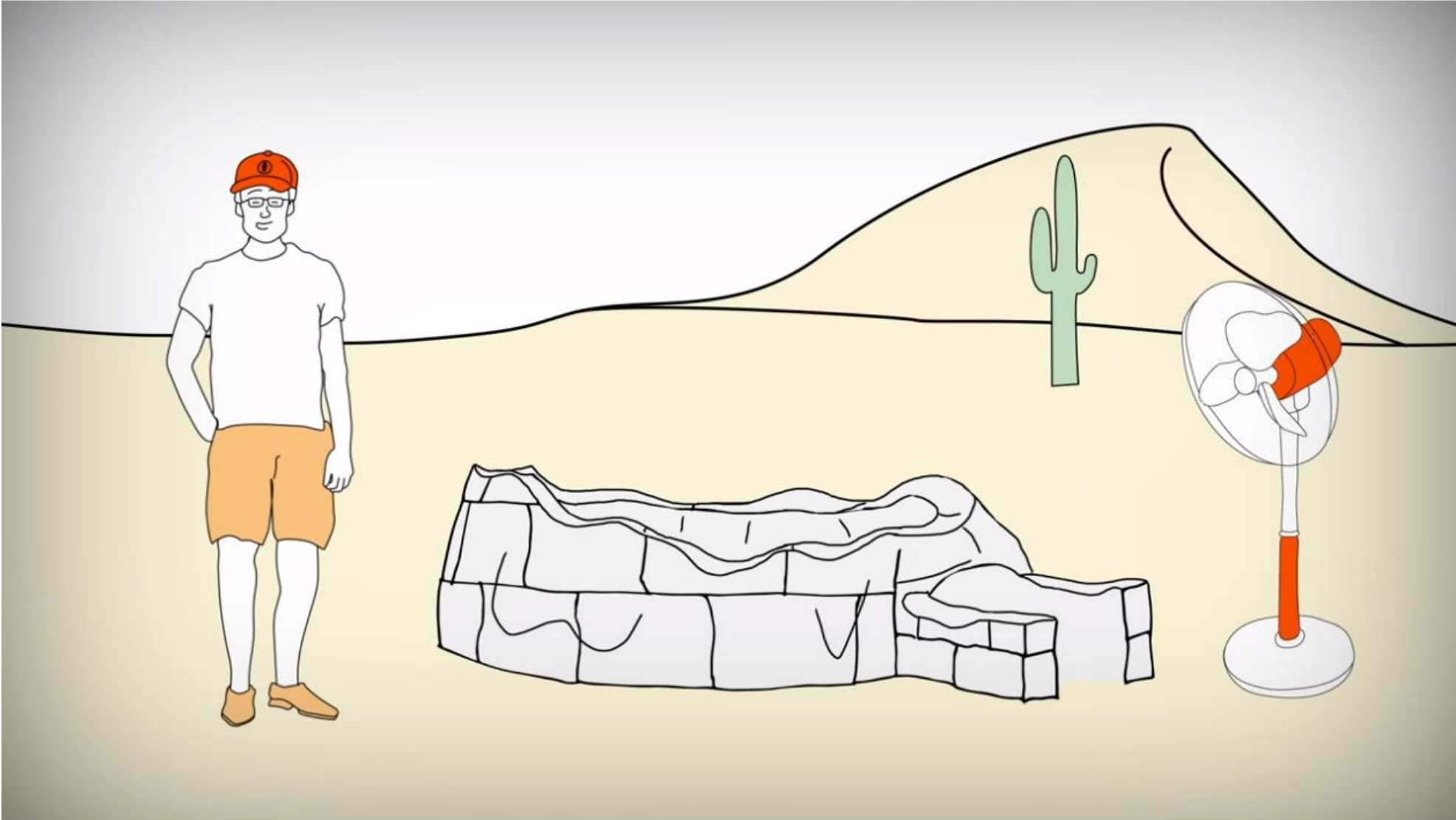
Coming this autumn/winter

- Tabletops
- Opus



<p>epd-norge</p> <p>Environmental product declaration in accordance with ISO 14025 and EN 15804-A2</p> <p>Frankie Family</p>  <p>JOHANSON</p> <p>Owner of the declaration: JOHANSON Design AS Product: Frankie Family Declaration number: NPD 1484 1312 04 Registered with: 7 pts This declaration is based on Product Category Rule: CEN Standard EN 12684:2011+A2:2019 series as used PCF: NPD 153:2022 Part 8 for Furniture EPD software: UCLux EPD generator 02_2020</p> <p>Program operator: The Norwegian EPD Foundation Product: Frankie Family Declaration number: NPD 1484 1312 04 Registered with: 7 pts This declaration is based on Product Category Rule: CEN Standard EN 12684:2011+A2:2019 series as used PCF: NPD 153:2022 Part 8 for Furniture EPD software: UCLux EPD generator 02_2020</p>	<p>epd-norge</p> <p>Environmental product declaration in accordance with ISO 14025 and EN 15804-A2</p> <p>Atticus Family</p>  <p>JOHANSON</p> <p>Owner of the declaration: JOHANSON Design AS Product: Atticus Family Declaration number: NPD 1546 1443 04 Registered with: 7 pts This declaration is based on Product Category Rule: CEN Standard EN 12684:2011+A2:2019 series as used PCF: NPD 153:2022 Part 8 for Furniture EPD software: UCLux EPD generator 02_2020</p> <p>Program operator: The Norwegian EPD Foundation Product: Atticus Family Declaration number: NPD 1546 1443 04 Registered with: 7 pts This declaration is based on Product Category Rule: CEN Standard EN 12684:2011+A2:2019 series as used PCF: NPD 153:2022 Part 8 for Furniture EPD software: UCLux EPD generator 02_2020</p>	<p>epd-norge</p> <p>Environmental product declaration in accordance with ISO 14025 and EN 15804-A2</p> <p>Peak</p>  <p>JOHANSON</p> <p>Owner of the declaration: JOHANSON Design AS Product: Peak Declaration number: NPD 1484 1312 04 Registered with: 7 pts This declaration is based on Product Category Rule: CEN Standard EN 12684:2011+A2:2019 series as used PCF: NPD 153:2022 Part 8 for Furniture EPD software: UCLux EPD generator 02_2020</p> <p>Program operator: The Norwegian EPD Foundation Product: Peak Declaration number: NPD 1484 1312 04 Registered with: 7 pts This declaration is based on Product Category Rule: CEN Standard EN 12684:2011+A2:2019 series as used PCF: NPD 153:2022 Part 8 for Furniture EPD software: UCLux EPD generator 02_2020</p>	<p>epd-norge</p> <p>Environmental product declaration in accordance with ISO 14025 and EN 15804-A2</p> <p>Parker</p>  <p>JOHANSON</p> <p>Owner of the declaration: JOHANSON Design AS Product: Parker Declaration number: NPD 1484 1312 04 Registered with: 7 pts This declaration is based on Product Category Rule: CEN Standard EN 12684:2011+A2:2019 series as used PCF: NPD 153:2022 Part 8 for Furniture EPD software: UCLux EPD generator 02_2020</p> <p>Program operator: The Norwegian EPD Foundation Product: Parker Declaration number: NPD 1484 1312 04 Registered with: 7 pts This declaration is based on Product Category Rule: CEN Standard EN 12684:2011+A2:2019 series as used PCF: NPD 153:2022 Part 8 for Furniture EPD software: UCLux EPD generator 02_2020</p>	<p>epd-norge</p> <p>Environmental product declaration in accordance with ISO 14025 and EN 15804-A2</p> <p>Sputnik</p>  <p>JOHANSON</p> <p>Owner of the declaration: JOHANSON Design AS Product: Sputnik Declaration number: NPD 1484 1312 04 Registered with: 7 pts This declaration is based on Product Category Rule: CEN Standard EN 12684:2011+A2:2019 series as used PCF: NPD 153:2022 Part 8 for Furniture EPD software: UCLux EPD generator 02_2020</p> <p>Program operator: The Norwegian EPD Foundation Product: Sputnik Declaration number: NPD 1484 1312 04 Registered with: 7 pts This declaration is based on Product Category Rule: CEN Standard EN 12684:2011+A2:2019 series as used PCF: NPD 153:2022 Part 8 for Furniture EPD software: UCLux EPD generator 02_2020</p>	<p>epd-norge</p> <p>Environmental product declaration in accordance with ISO 14025 and EN 15804-A2</p> <p>Haddoc</p>  <p>JOHANSON</p> <p>Owner of the declaration: JOHANSON Design AS Product: Haddoc Declaration number: NPD 1484 1312 04 Registered with: 7 pts This declaration is based on Product Category Rule: CEN Standard EN 12684:2011+A2:2019 series as used PCF: NPD 153:2022 Part 8 for Furniture EPD software: UCLux EPD generator 02_2020</p> <p>Program operator: The Norwegian EPD Foundation Product: Haddoc Declaration number: NPD 1484 1312 04 Registered with: 7 pts This declaration is based on Product Category Rule: CEN Standard EN 12684:2011+A2:2019 series as used PCF: NPD 153:2022 Part 8 for Furniture EPD software: UCLux EPD generator 02_2020</p>
---	---	--	---	--	--

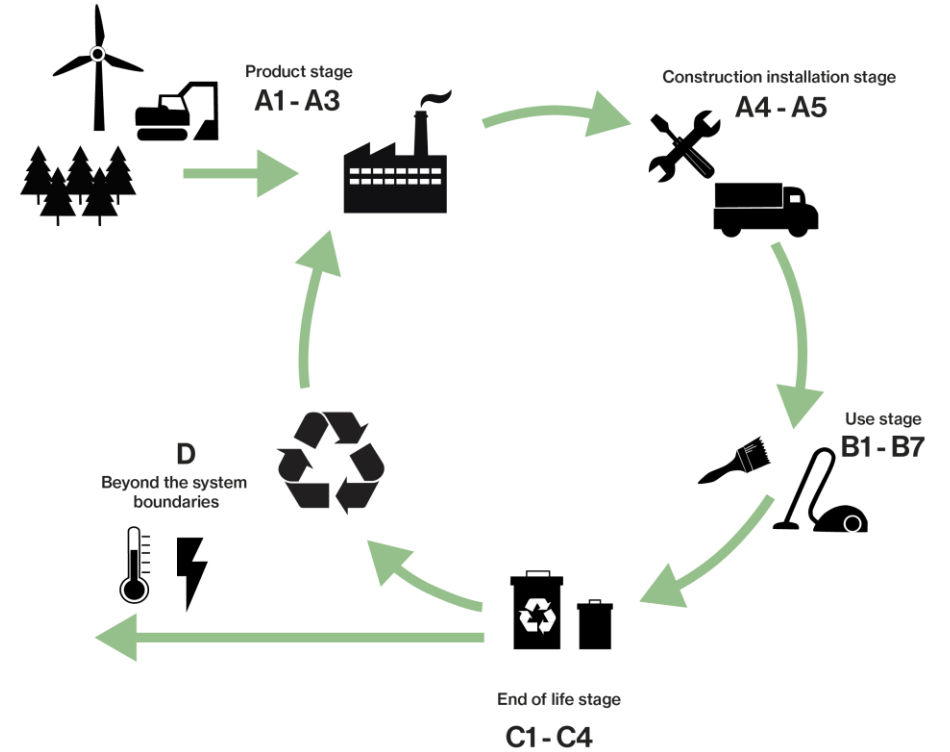
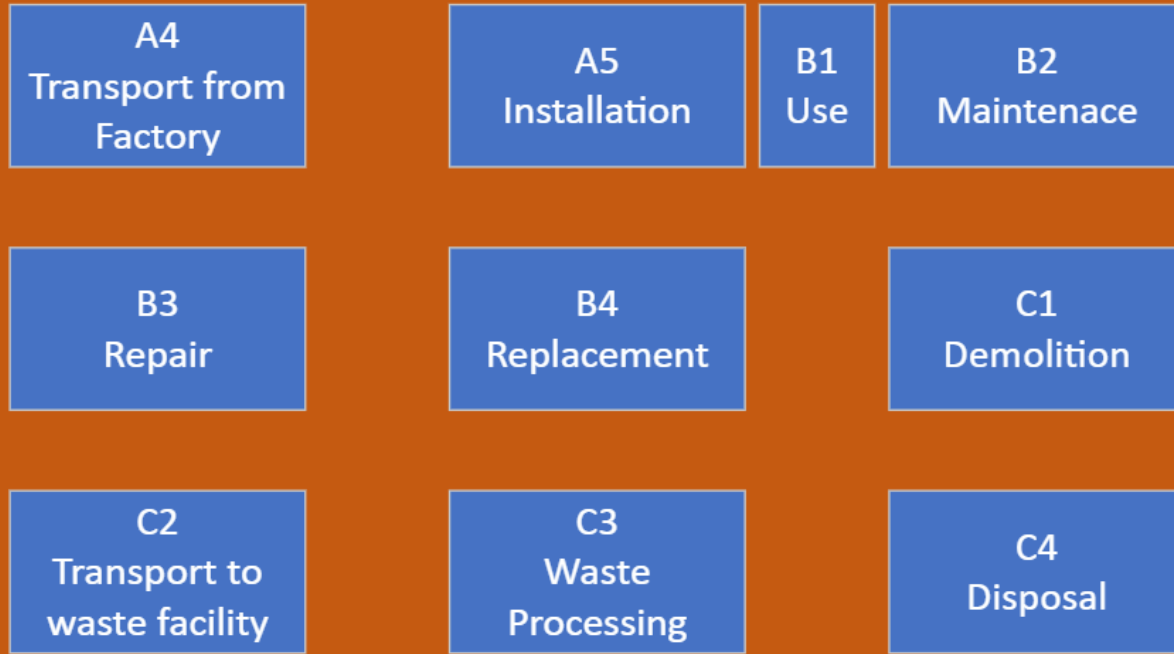




Cradle to Gate



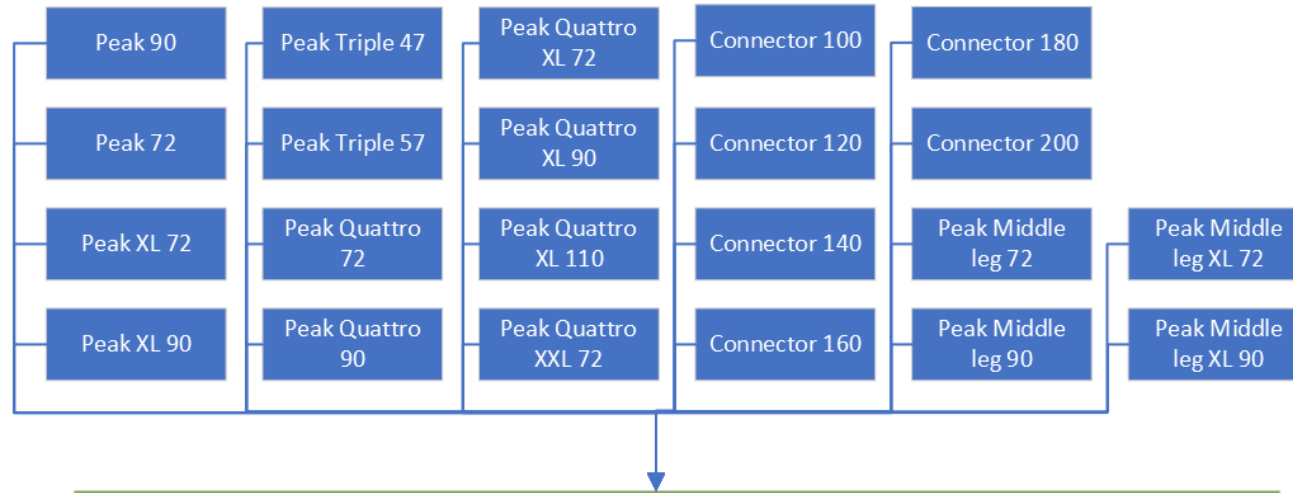
Cradle to Grave



Cradle to Cradle



EPD crash course



PEAK EPD



Key environmental indicators (A1-A3) for variants of this EPD		
Variants	Weight (kg)	GWPTotal (kg CO ₂ -eq)
Peak 72	8,91	39,88
Peak 90	11,25	50,33
Peak XL 72	9,61	42,98
Peak XL 90	11,67	52,17
Peak Triple 47	5,36	24,04
Peak Triple 57	5,98	27,54
Peak Quattro 72	7,89	35,49
Peak Quattro 90	9,12	41,00
Peak Quattro 110	12,42	55,71
Peak Quattro XL 72	9,12	41,00
Peak Quattro XL 90	10,77	48,35
Peak Quattro XL 110	12,83	57,54
Peak Quattro XXL 72	16,52	51,62

Key environmental indicators (A1-A3) for options for this EPD		
Options	Weight (kg)	GWPTotal (kg CO ₂ -eq)
Peak Connector 100	9,48	53,44
Peak Connector 120	10,09	56,92
Peak Connector 140	12,15	68,51
Peak Connector 160	13,60	76,62
Peak Connector 180	14,63	82,42
Peak Connector 200	16,27	91,69
Peak 72 Middle leg	4,44	19,81
Peak 90 Middle leg	5,67	25,33
Peak XL 72 Middle leg	4,85	21,65
Peak XL 90 Middle leg	5,98	26,82

How do you read an EPD?

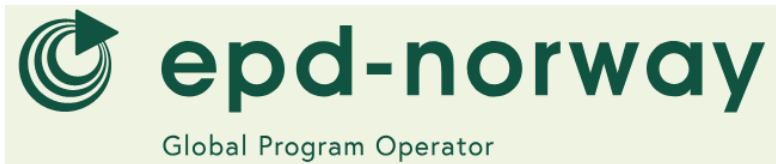
Pelican



Parker

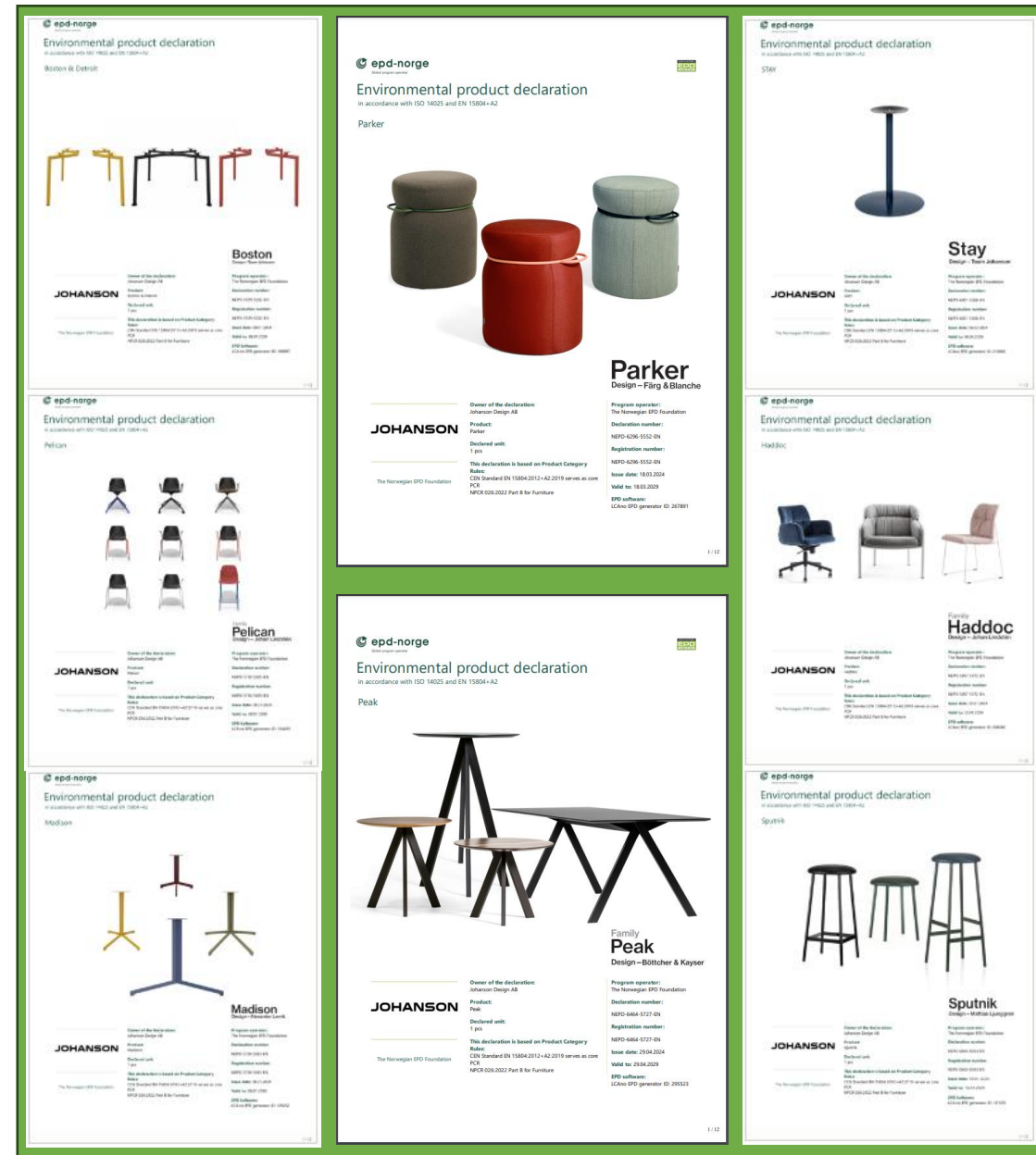


Haddoc

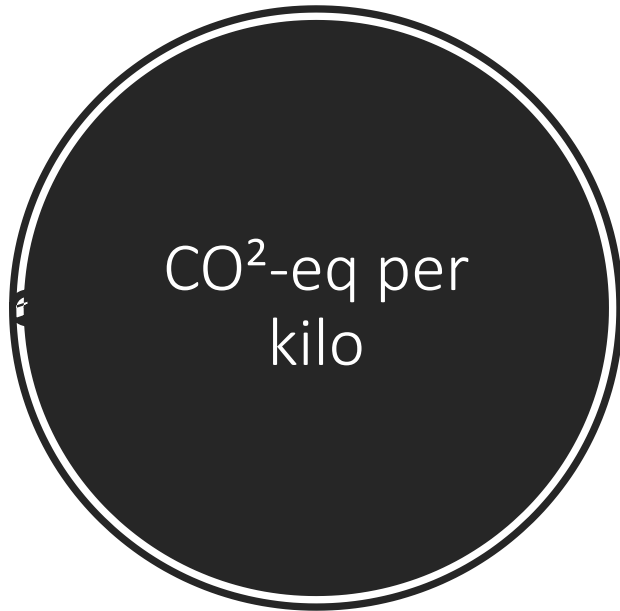


<https://www.epd-norge.no/epder/mobel/>

JOHANSON
Sustainability



JOHANSON



MATERIAL	KG CO ² EQ
Wool	56.0639
Cotton	15.7370
Foam	6.5439
Polyester	5.4756
Plastic (PP)	2.9663
Steel	2.6539
Cardboard	-0.7503
Birch plywood	-1.0639
Birch hardwood	-1.5616

CSR – Corporate Social Responsibility

Underrubrik

- A new improved system to assess our suppliers.

JOHANSON

Document M 10-448.5.c Utgivet 2024-04-23

Self-evaluation form for suppliers

Johanson Design has been certified against ISO 14001 since 2010, and we use the requirements of Miljöbalken as the basis for assessing the company's suppliers. We ask you to complete this form, attach declarations from Miljöbalken, and review Johanson Design's code of conduct, then sign the compliance certificate as soon as possible.
Please feel free to contact csr@johansondesign.se if you have any questions or feedback on the documents.

1. Company information

Company:

Address:

Contact person:

E-mail:

Phone:

2. Product information

What products do you deliver to Johanson Design?

<input type="text"/>	<input type="text"/>
<input type="text"/>	<input type="text"/>
<input type="text"/>	<input type="text"/>

Do you purchase raw materials/components from any of the following high-risk countries? If yes, what percentage of your purchases come from the country?

Russia

China

Belarus

North Korea

Other high-risk countries

In which countries do your top 5 subcontractors operate (for materials, components, for manufacturing the product/products)?

1. For example, Sweden, China
2. <input type="text"/>
3. <input type="text"/>
4. <input type="text"/>
5. <input type="text"/>

Johanson Design AB
Arkada Arkadavägen 10
285 21 Mårkersjö

Telefon: 0430 - 735 00
E-post: csr@johansondesign.se
Webb: www.johansondesign.se

Sida 1 av 4

Sustainable Material

Our journey to become more circular

- Experimenting with new materials
 - Cork
 - Bamboo
 - Hemp
 - Hairlok
 - Coconut fiber
- Circularity on our current materials
 - Ecophon
 - Textiles
 - Steel



Digital product passport

DPP – The future of Traceability

- New EU legislation
- Product Identification & Traceability
- Sustainability & Environmental Impact
- Materials and Components Information
- Maintenance, Repairs, and Upgrades
- Ownership and Usage Rights
- Compliance and Certification Data



Social media

Tell the world what we do, and how we do it!

- Monthly sustainability newsletter
- News about certification
- Show our work!



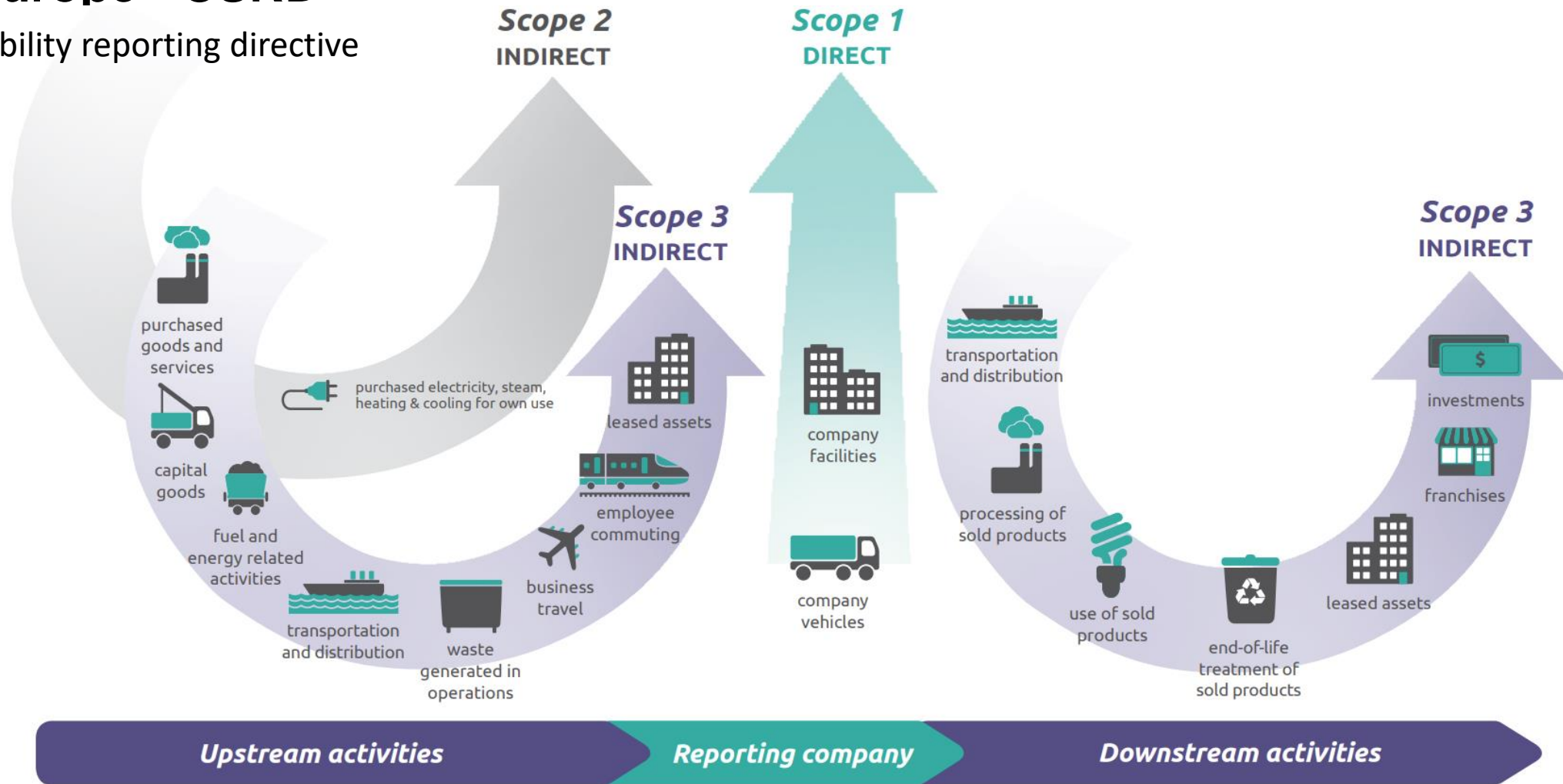
Change in Europe

- **EUDR**
Regulation on Deforestation Free Products
- **CBAM**
Carbon Border Adjustment Mechanism
- **CSDD**
Corporate sustainability due diligence
- **CSRD**
Corporate sustainability reporting directive



Change in Europe - CSRD

Corporate sustainability reporting directive



Thanks for your attention

Q & A

070-310 59 07
lucas@johansondesign.se